

INTERVENTO
**Permesso di Costruire per le opere di urbanizzazione
 ELETTRICHE E DEL GAS METANO**
 del primo P.U.A. dell'area MILIOSA IN VIA MILIOSA

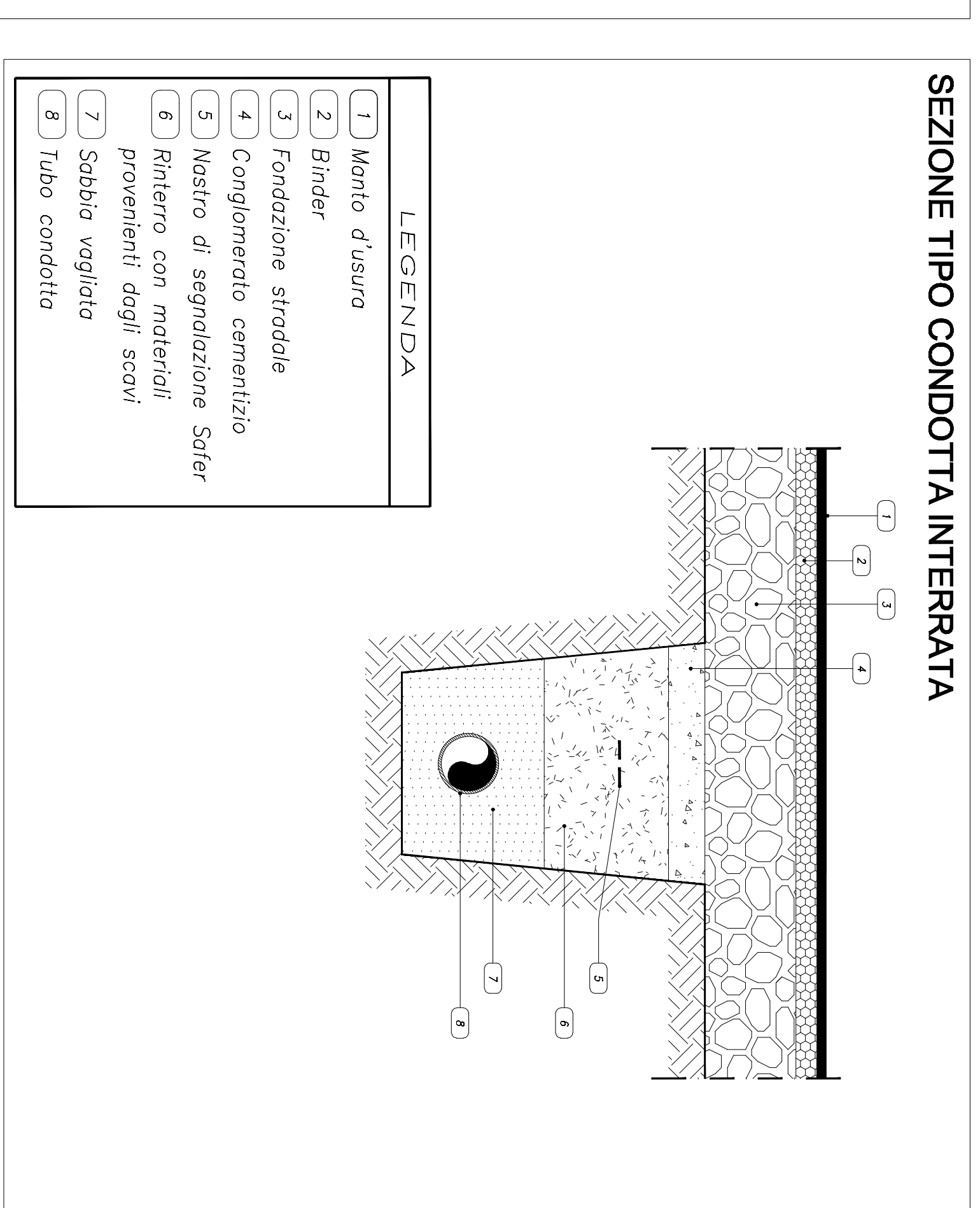
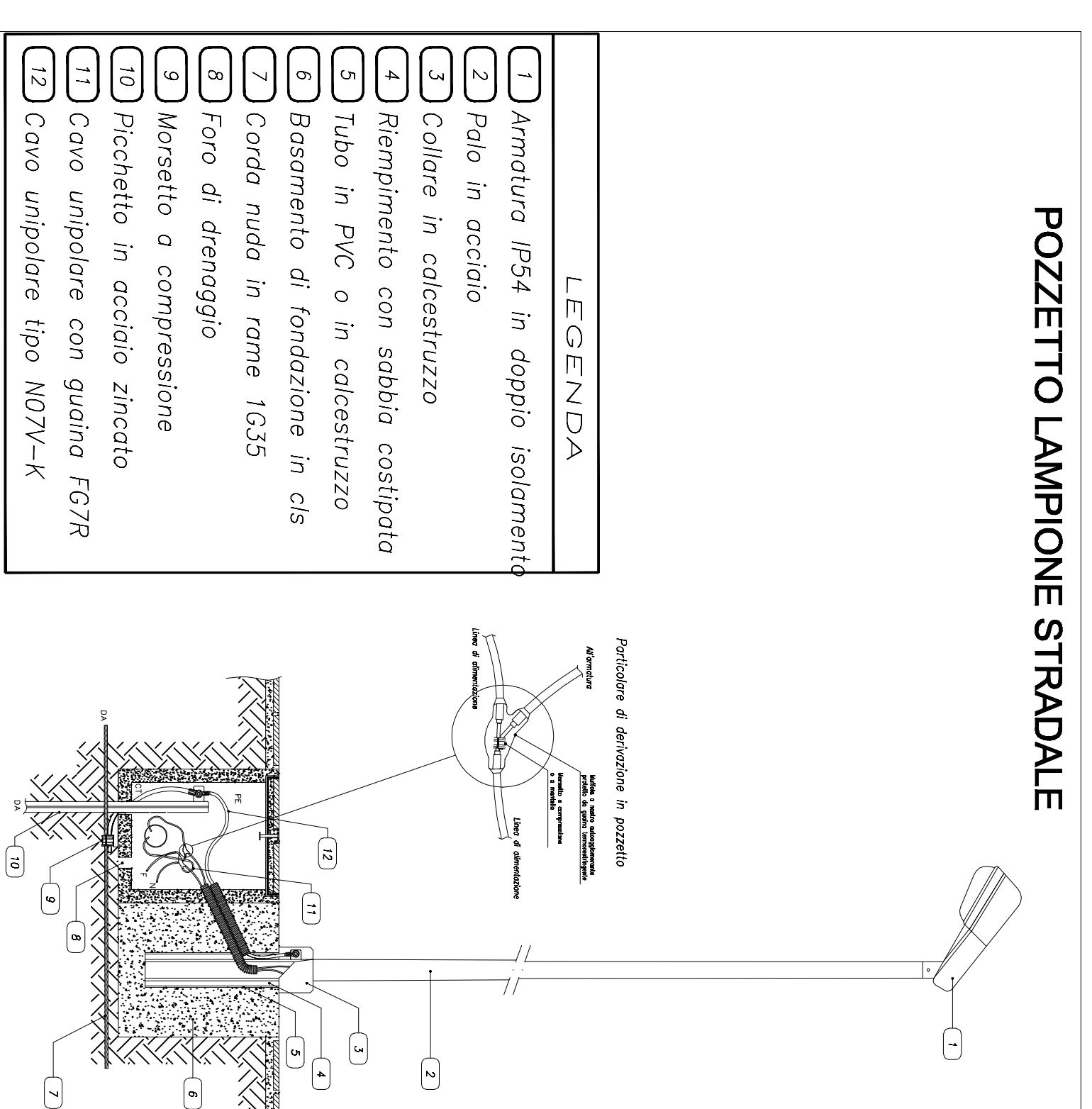
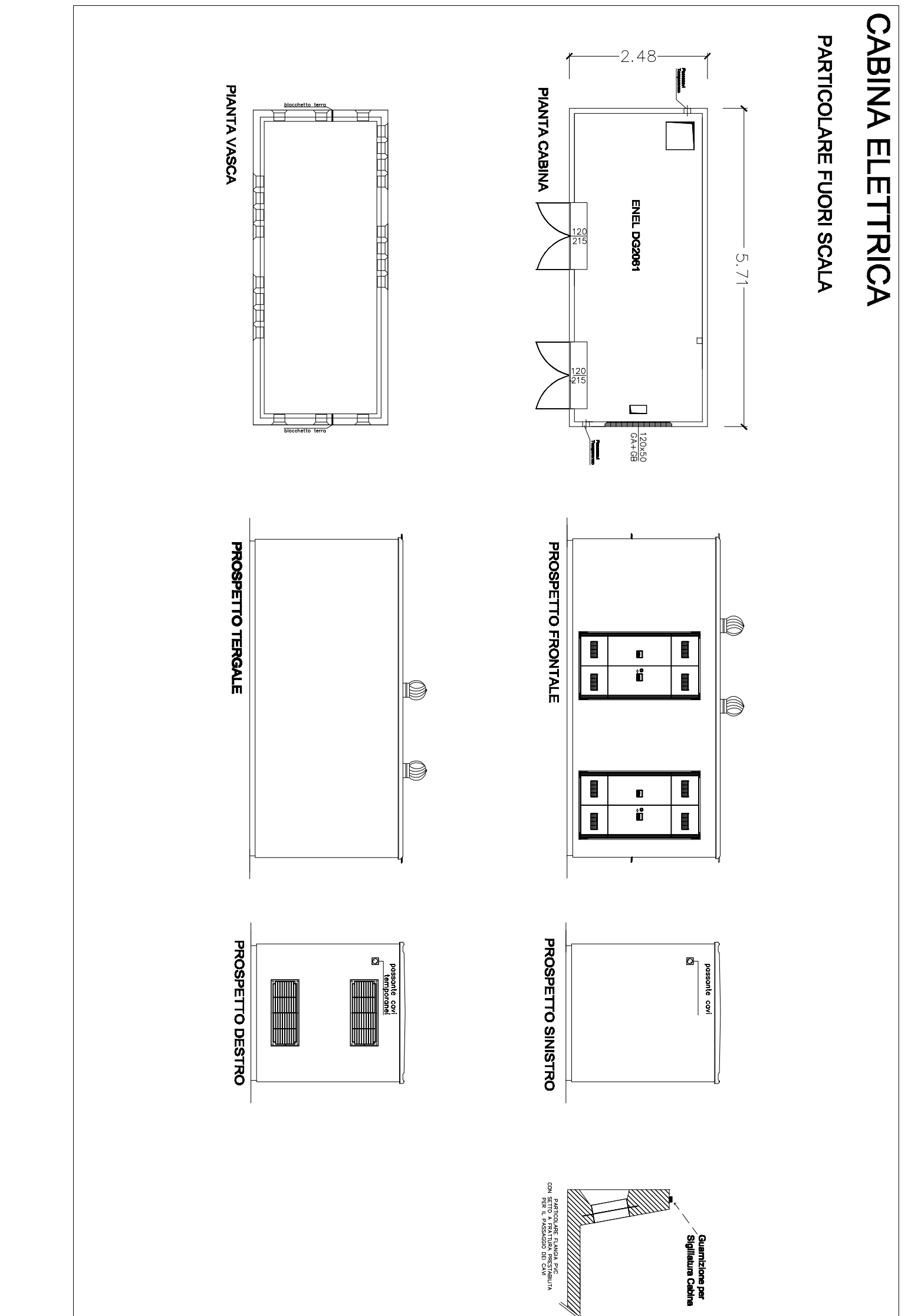
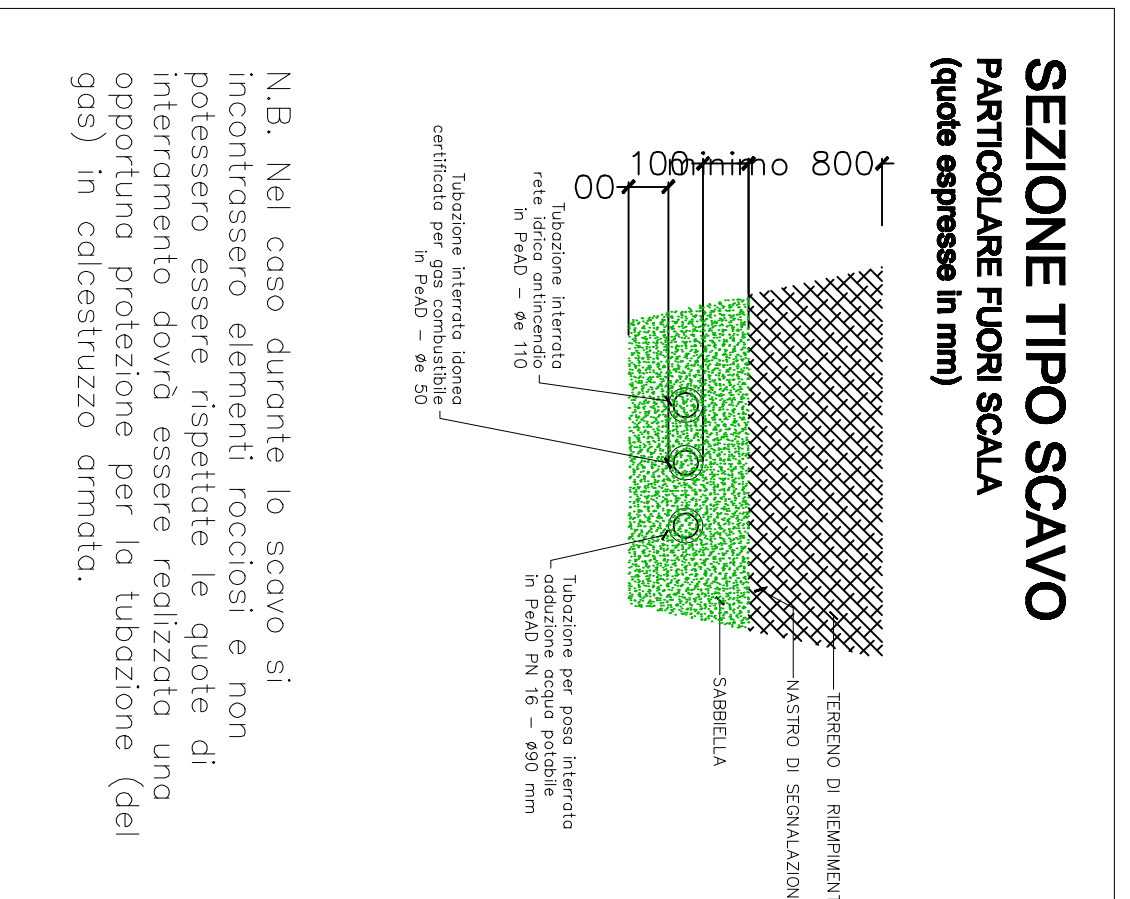
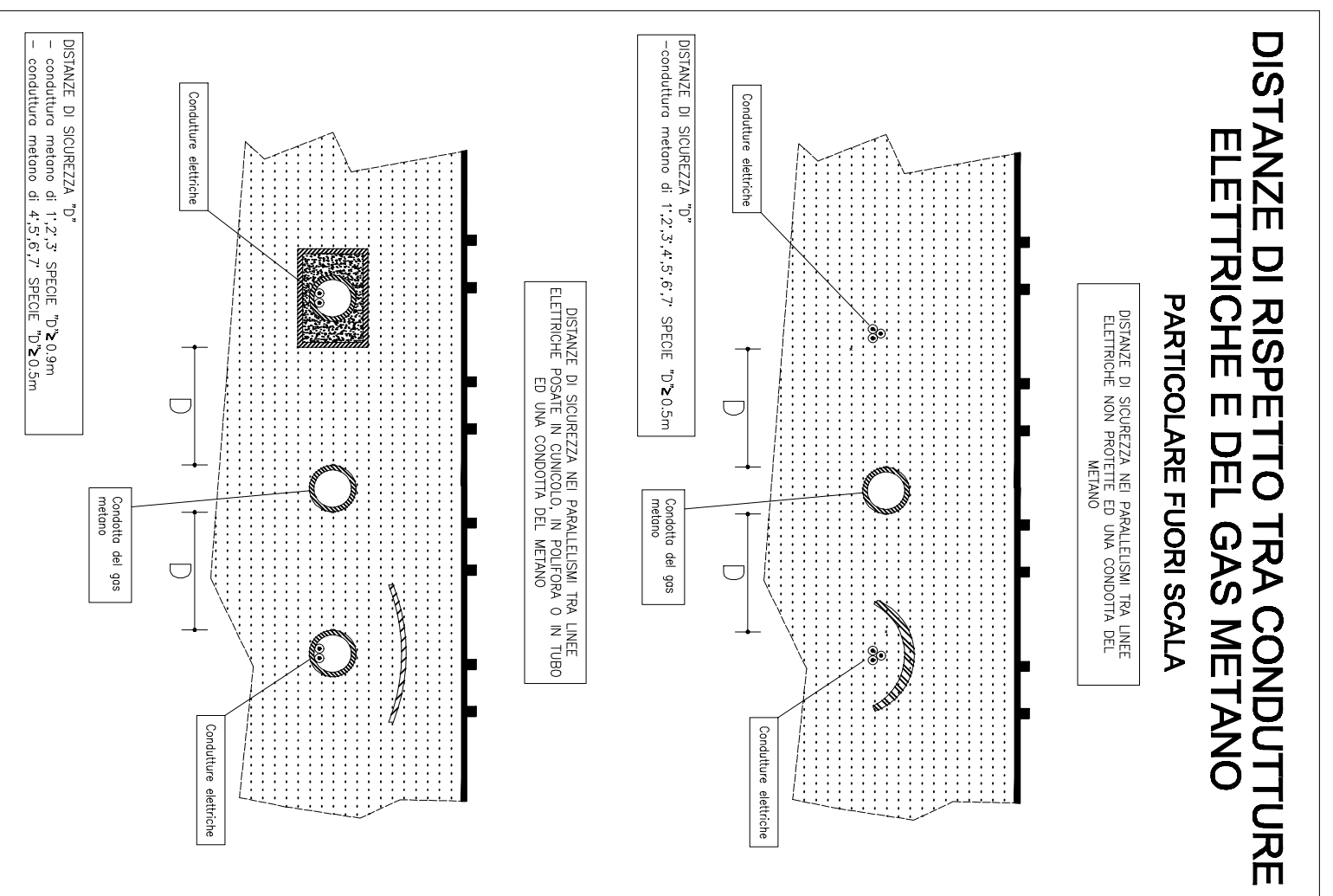
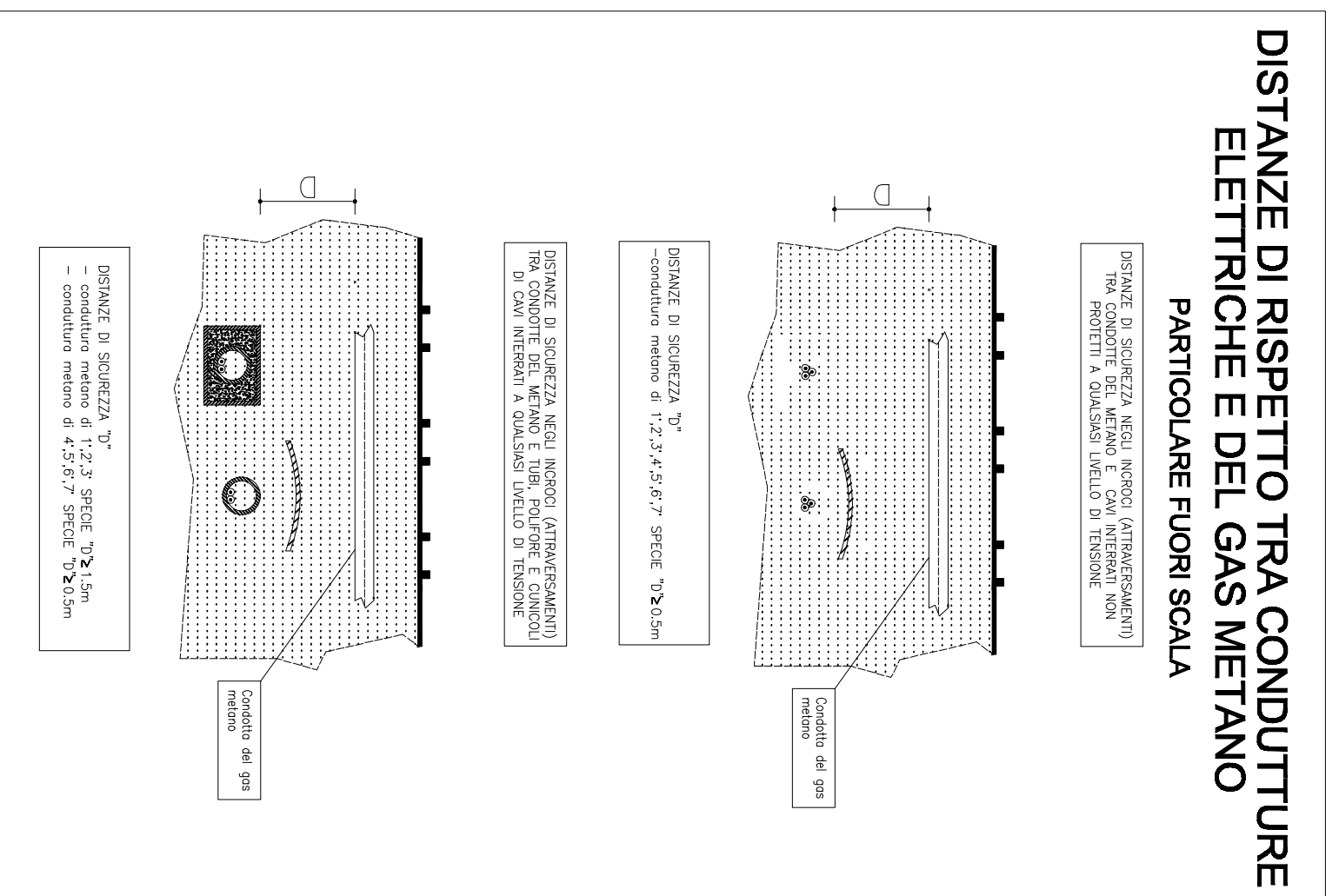
PARTICOLARI COSTRUTTIVI
 URBENZE E FOGNATURE

TAV. 11PDC

Scala 1:500 - 1:200 - 1:100

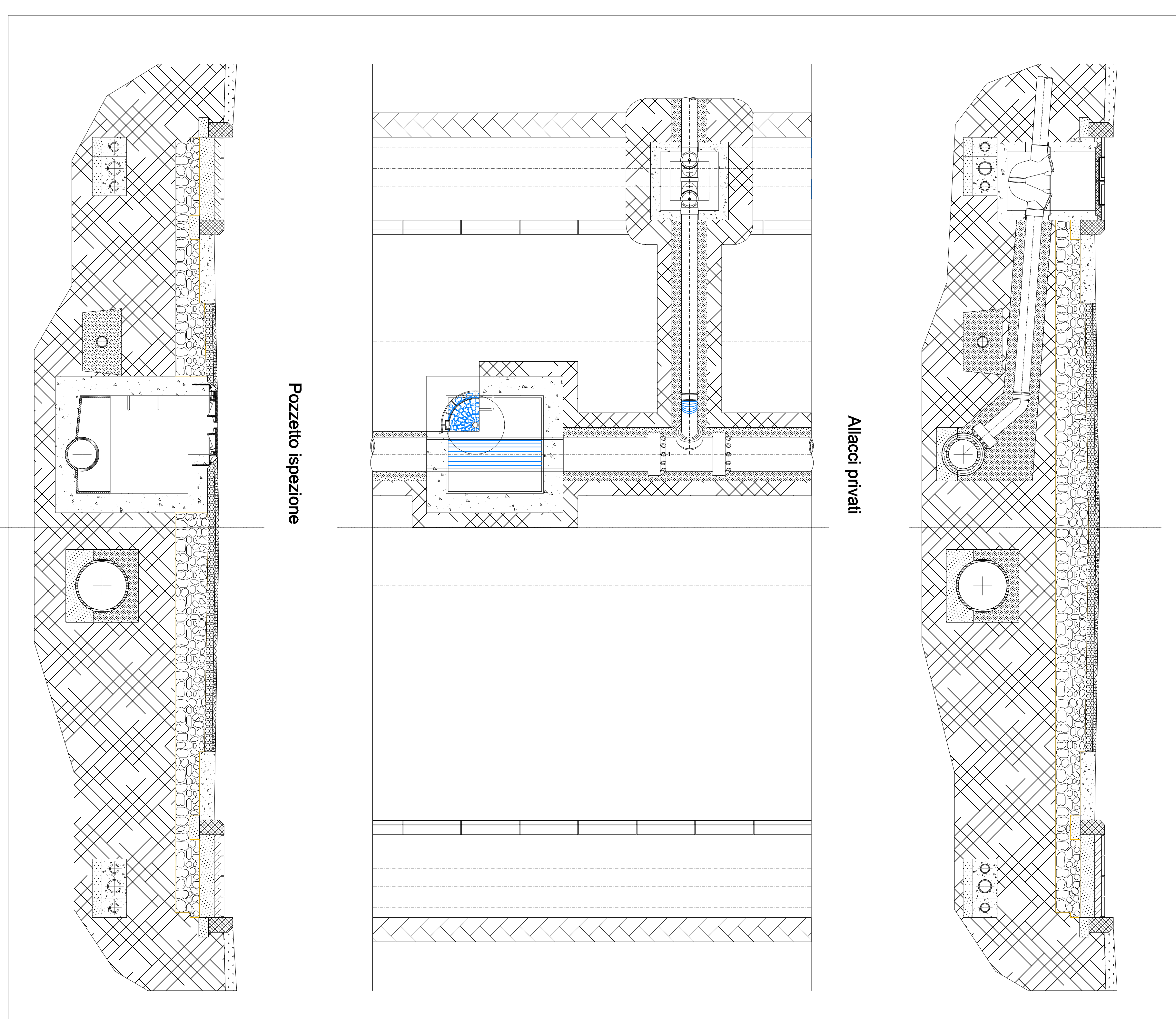
In proposta

Esecuto	
Esecuto	
Esecuto	
Esecuto	
Esecuto	

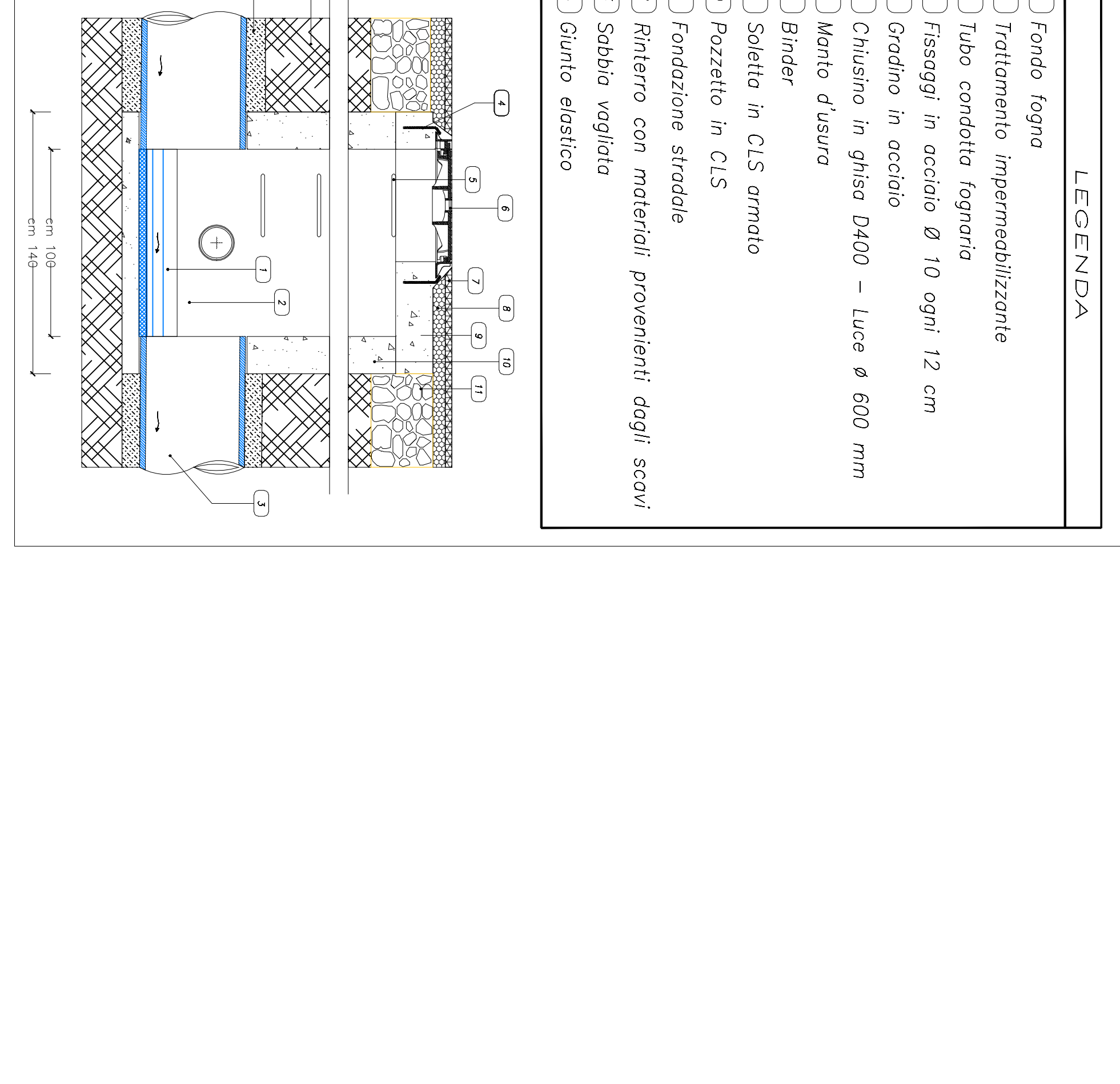
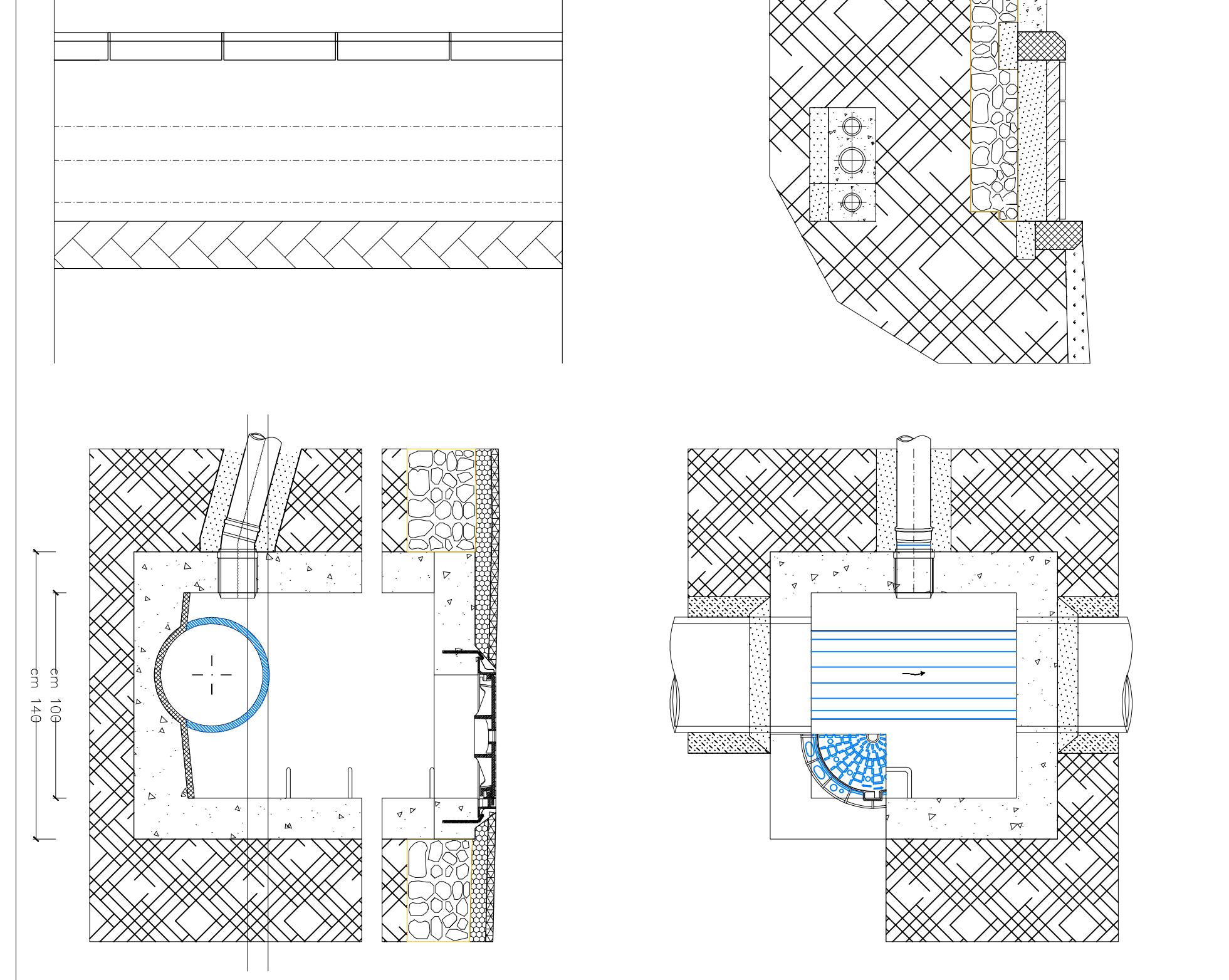
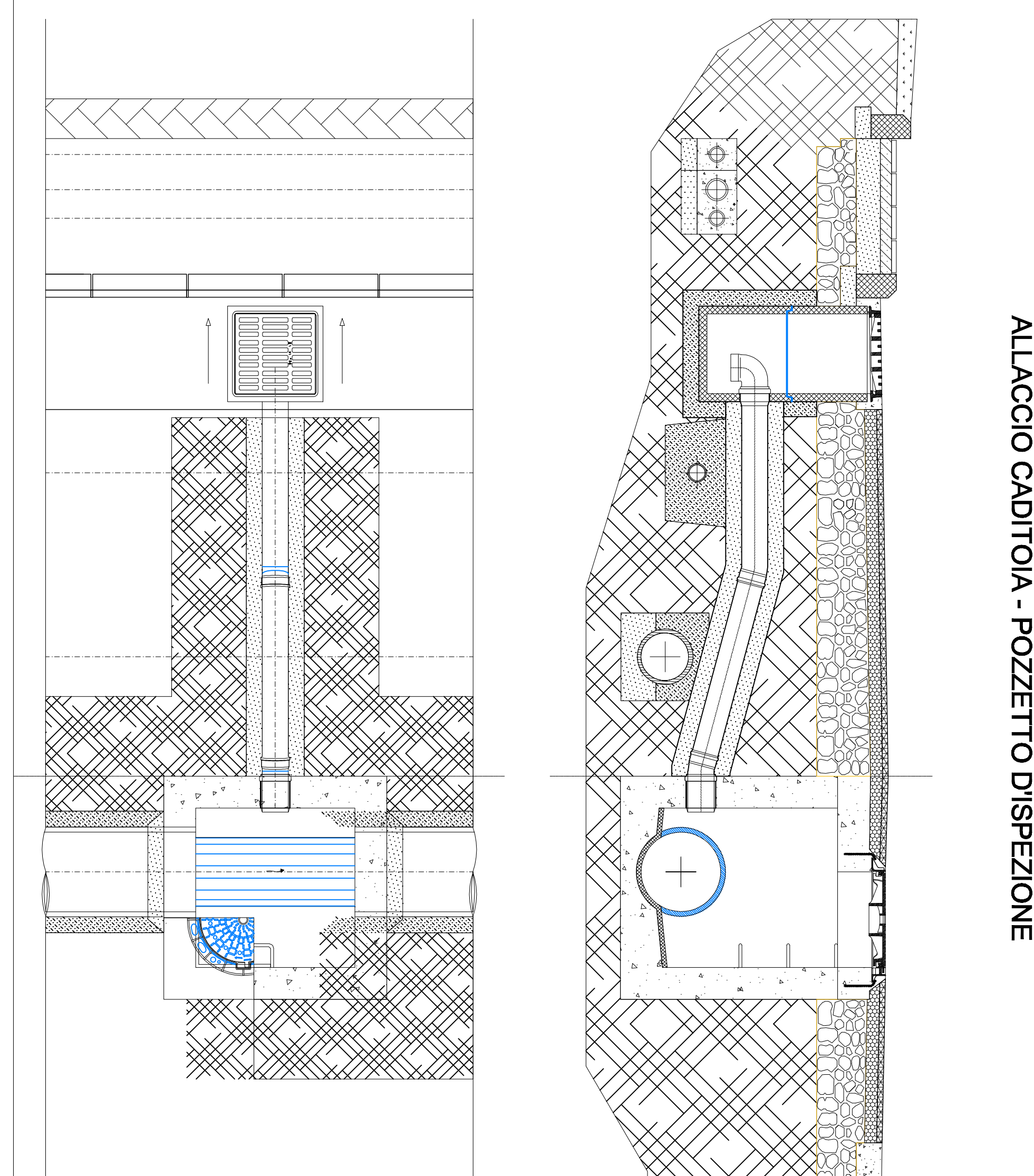
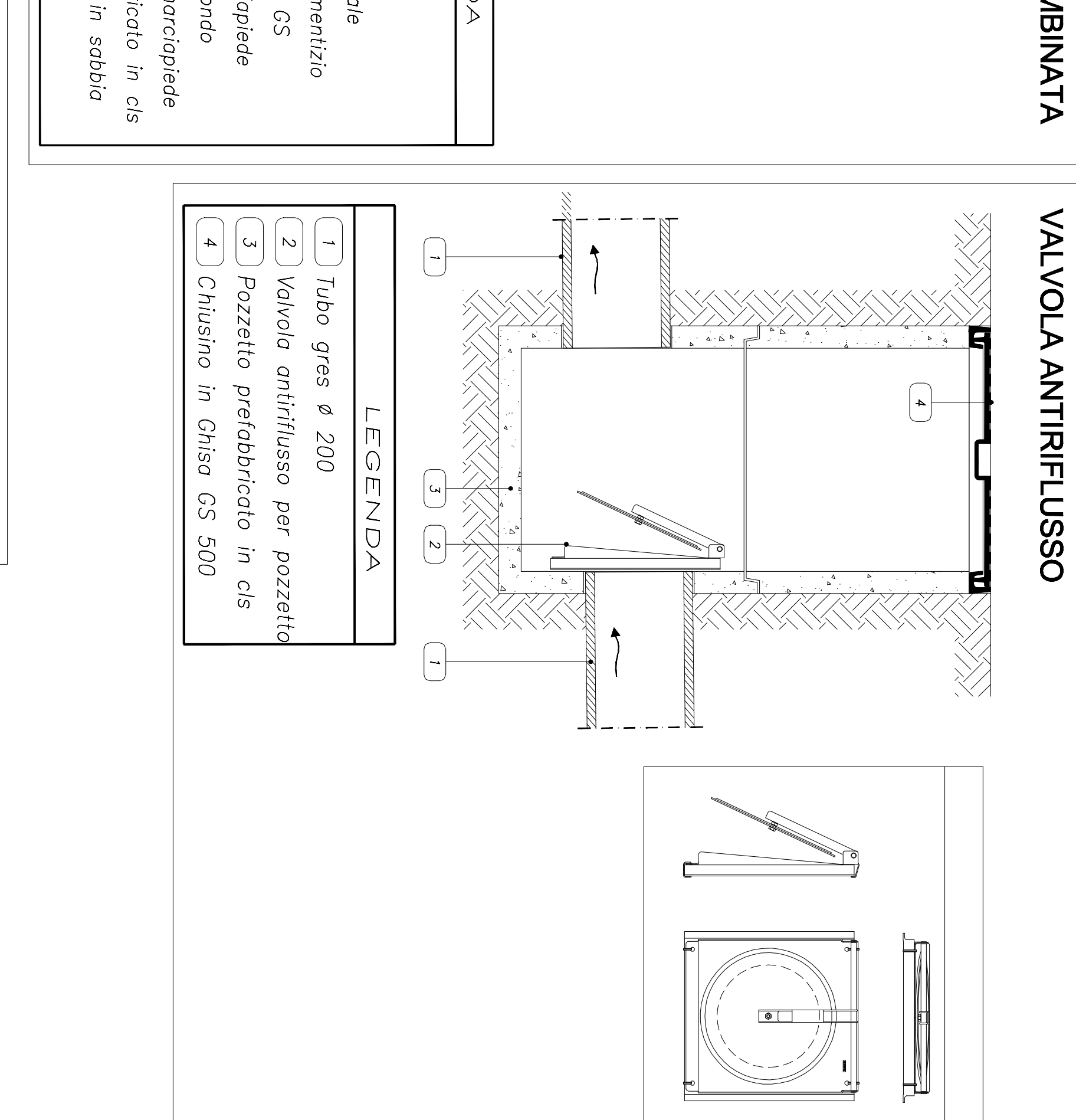
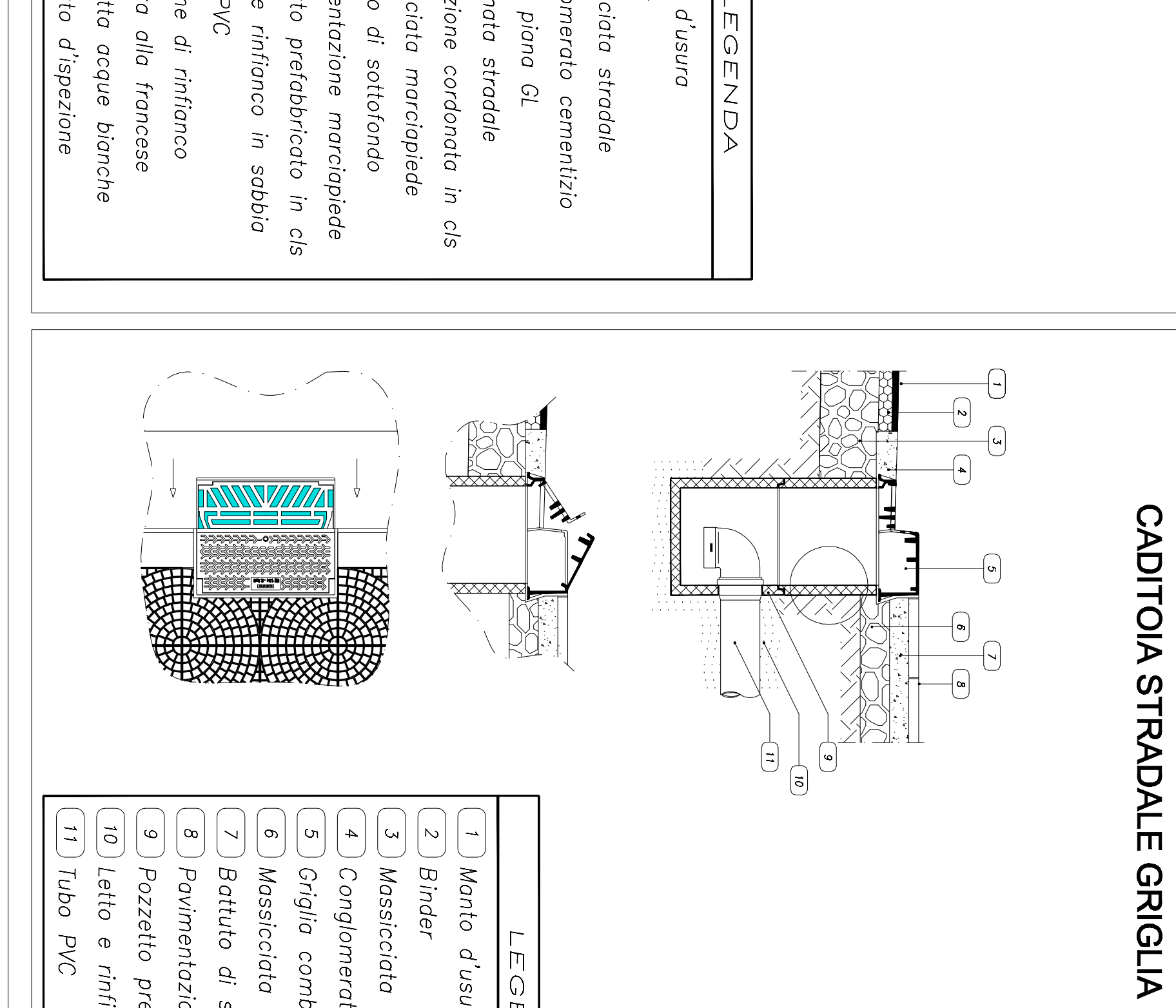
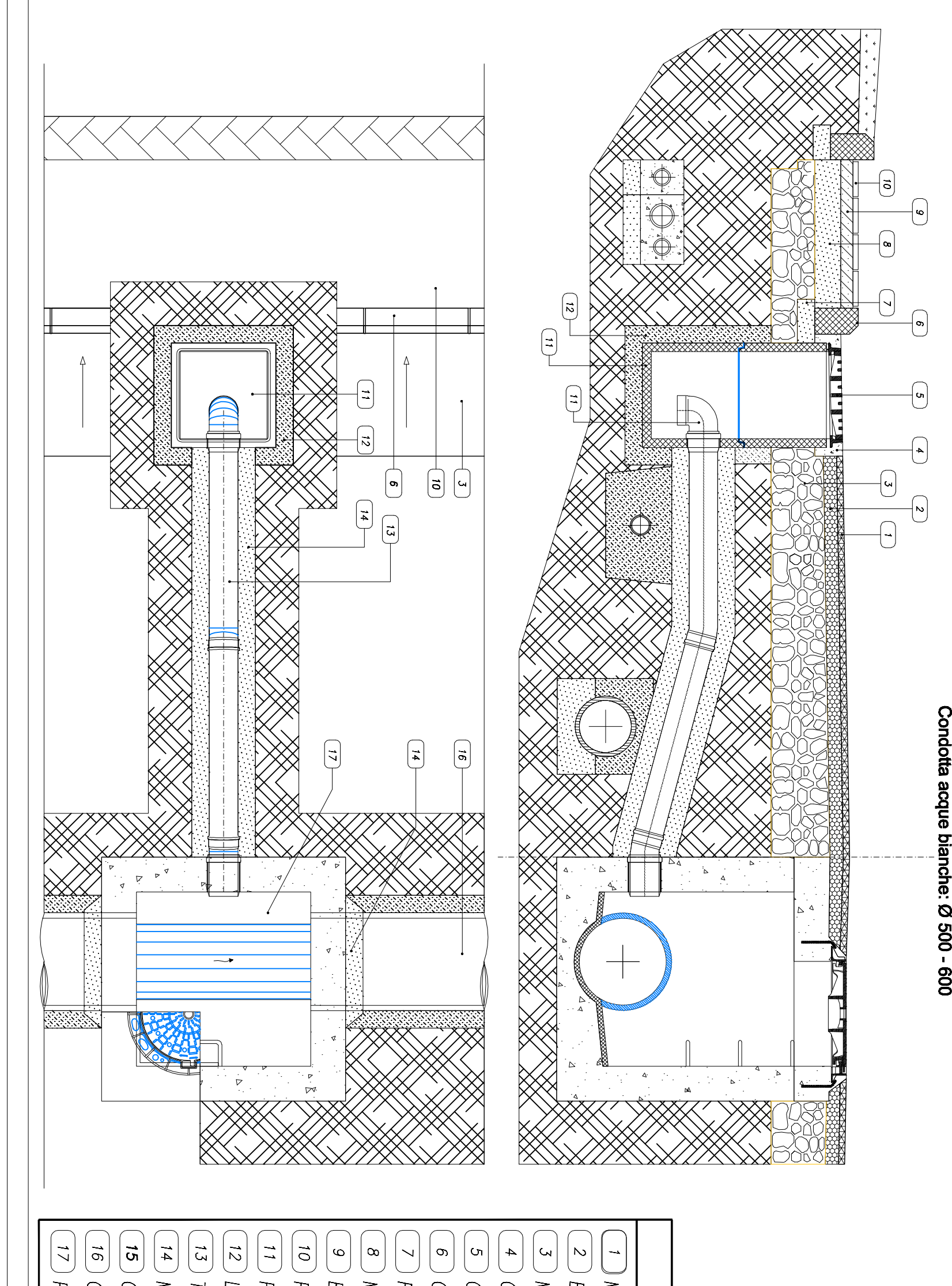


MANUFATTI STRADALI E FOGNARI

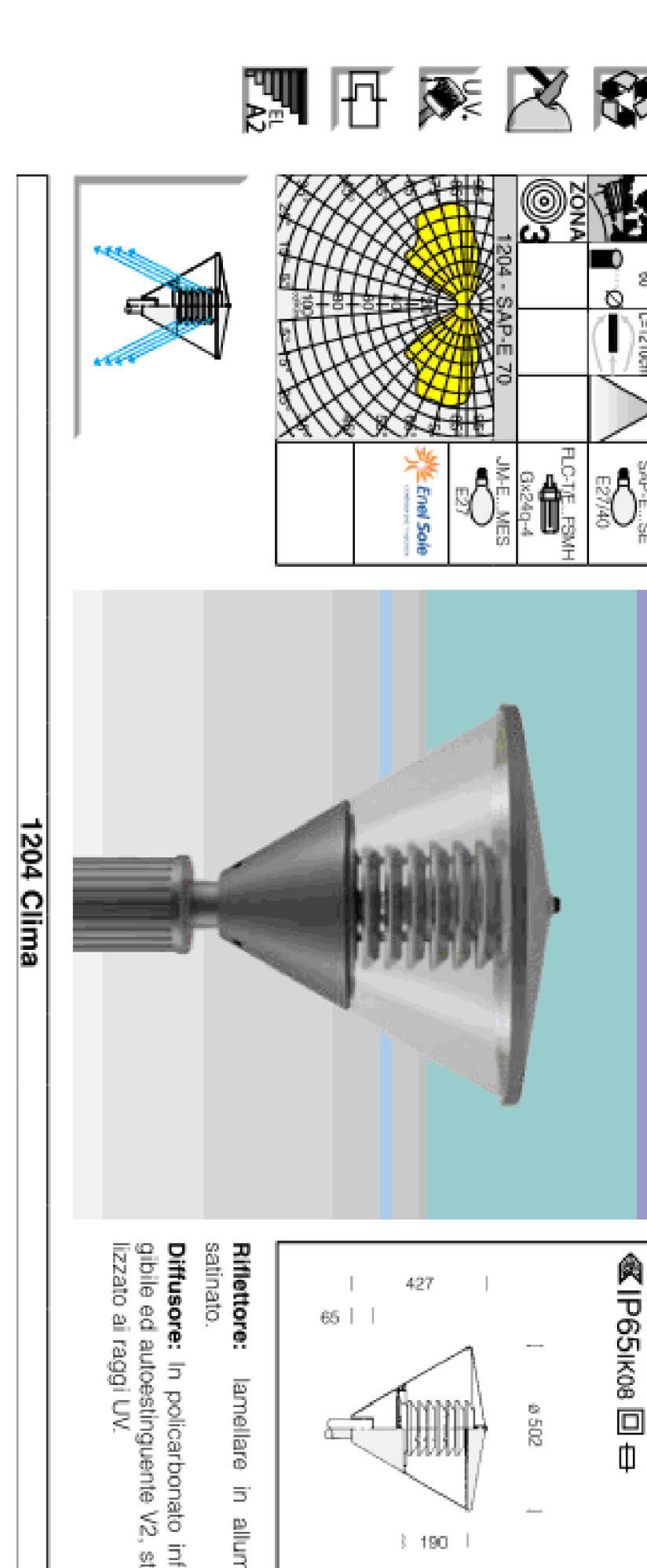
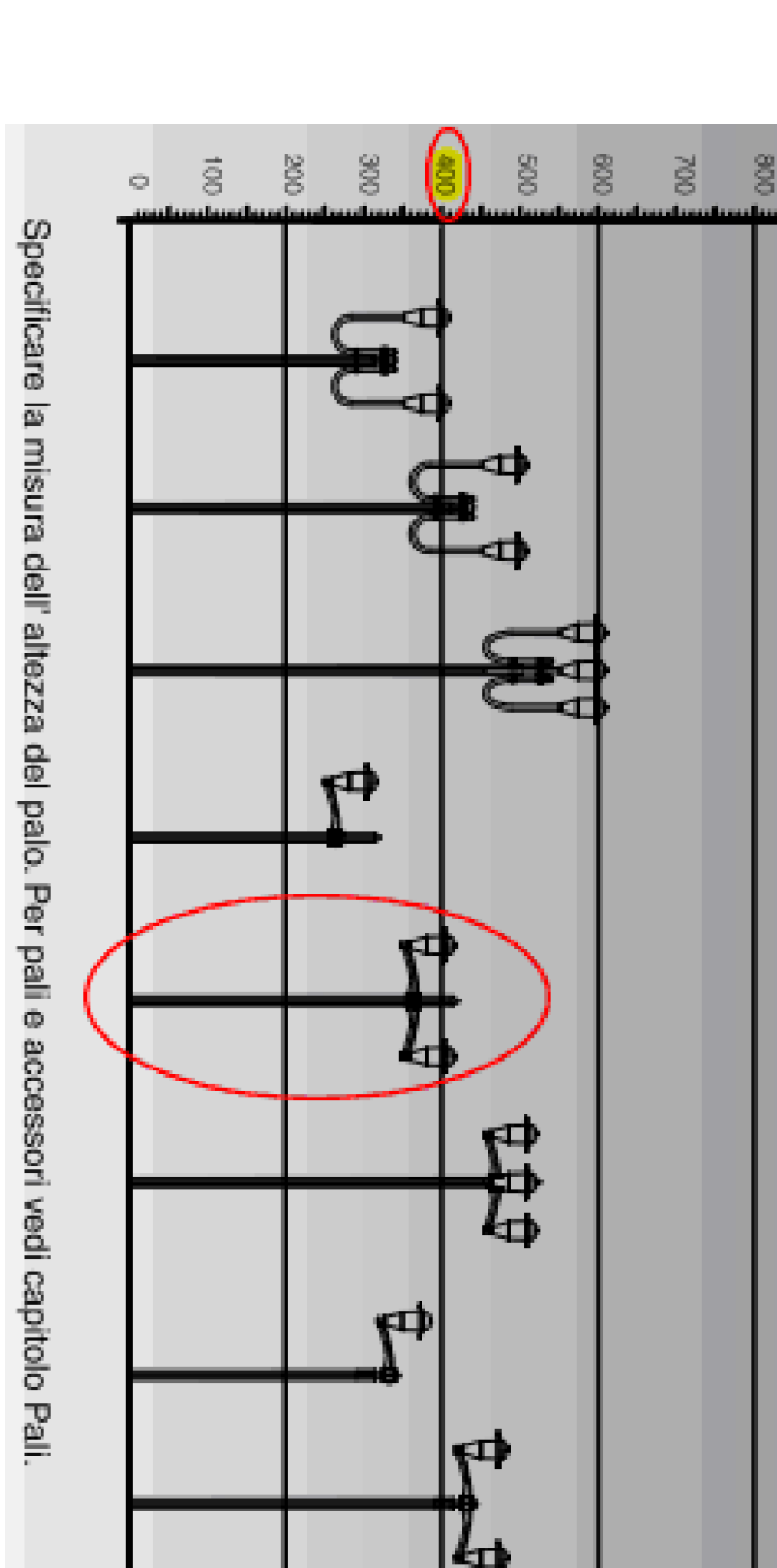
PIANTE E SEZIONI STRADALI TIPO



PARTICOLARI DERIVAZIONI E COLLEGAMENTI
 Condotte interrate: max Ø 100
 Condotte aeree: max Ø 100 - Ø 150

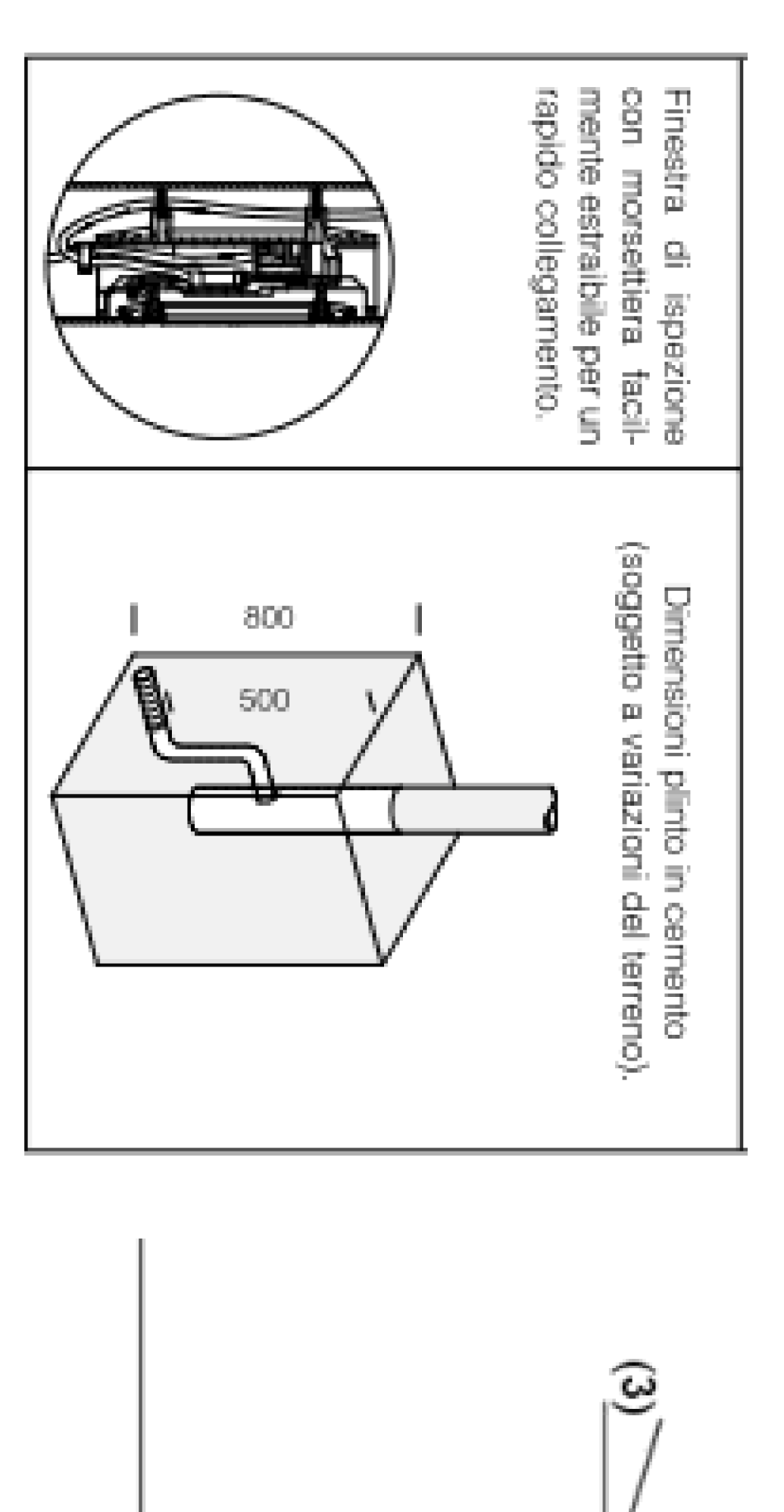
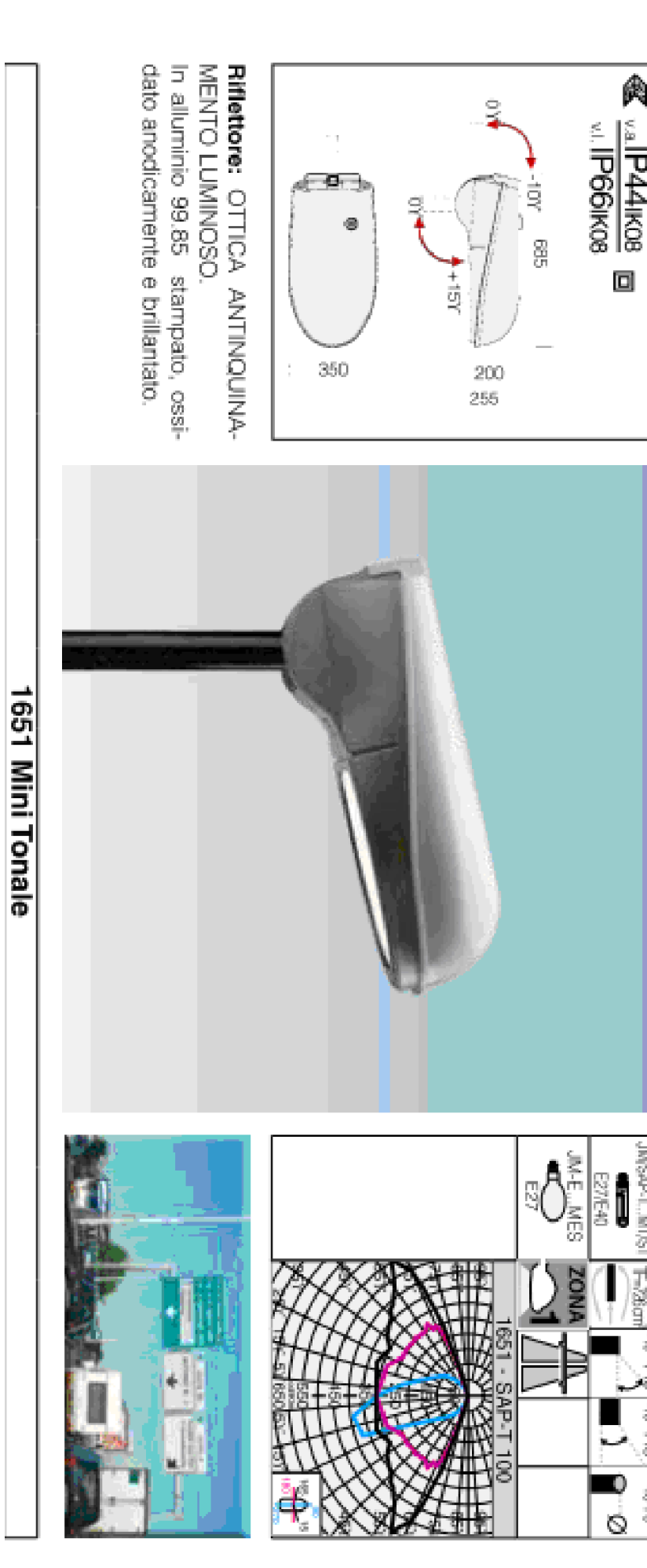


DISANO 1204 CLIMA SAP-E 100 CNR-F
 (Palo e mossettiera sempre a doppio isolamento)



Caratteristiche nastro di segnalazione

DISANO 1651 MINITONALE SAP-T 150 CNR
 (Palo e mossettiera sempre a doppio isolamento)



- Distanza pali: 38.000 m
- Altezza di montaggio (1): 10.255 m
- Altezza fuochi: 10.000 m
- Distanza dal bordo stradale (2): 0.000 m
- Inclinazione braccio (3): 0.0°
- Lunghezza braccio (4): 0.650 m

